

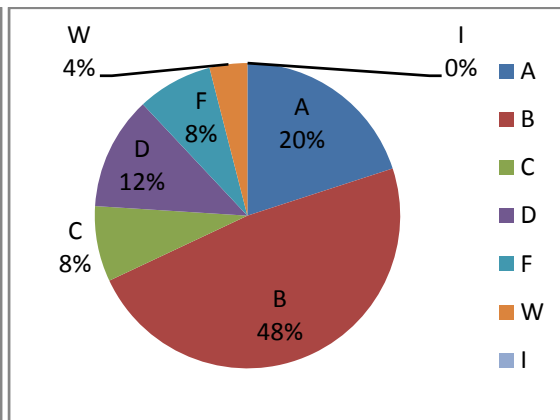
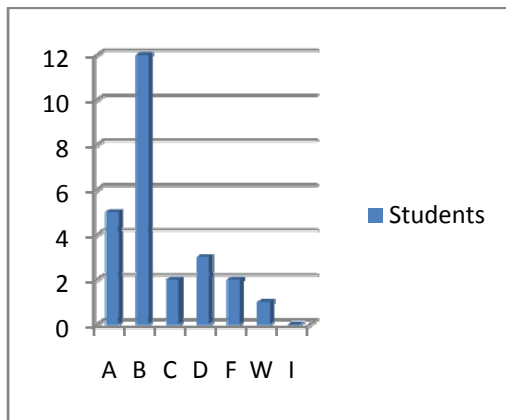
**Grade Distribution Reports**

**BUS 495 Business Strategy**

**September 2007 to November 2008**

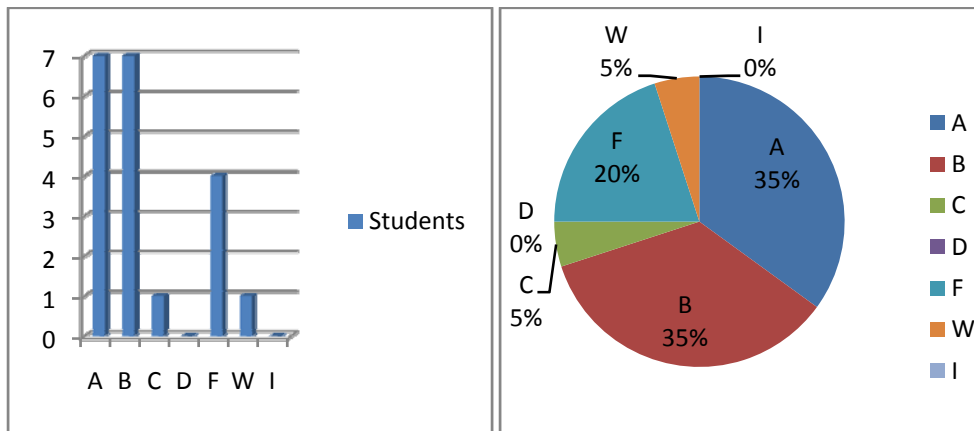
**BUS 495 Business Strategy**  
**Term: September 2007**  
**Section: 30007375**

Letter Grade	Students
A	5
B	12
C	2
D	3
F	2
W	1
I	0
<b>Total</b>	<b>25</b>



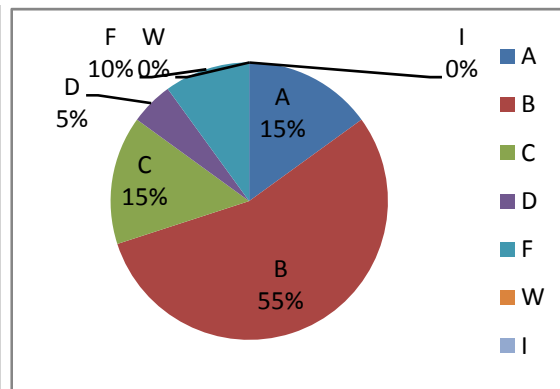
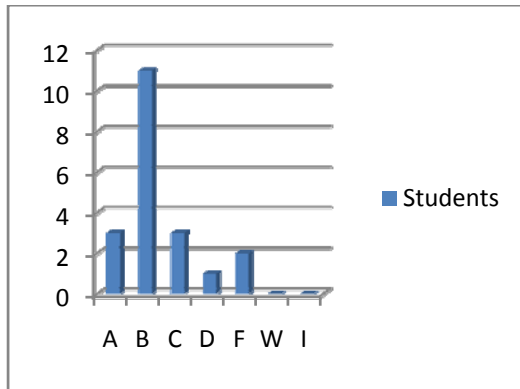
**BUS 495 Business Strategy**  
**Term: January 2008**  
**Section: 30008291**

Letter Grade	Students
A	7
B	7
C	1
D	0
F	4
W	1
I	0
<b>Total</b>	<b>20</b>



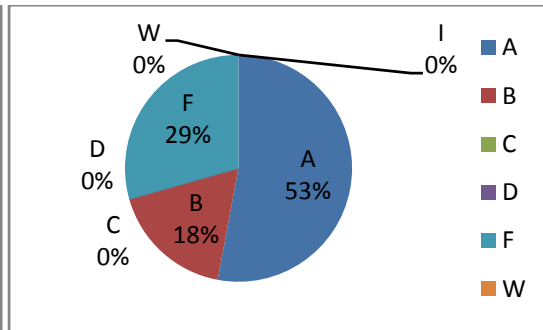
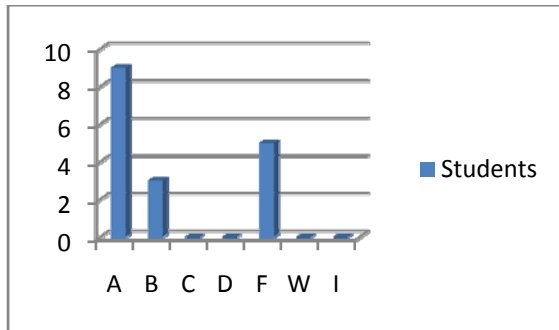
**BUS 495 Business Strategy**  
**Term: January 2008**  
**Section: 30009163**

Letter Grade	Students
A	3
B	11
C	3
D	1
F	2
W	0
I	0
<b>Total</b>	<b>20</b>



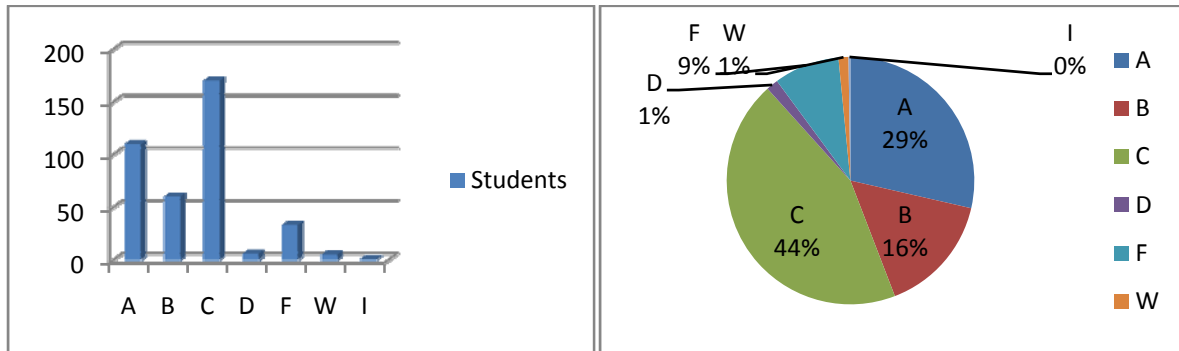
**BUS 495 Business Strategy**  
**Term: March 2008**  
**Section: 3009190**

Letter Grade	Students
A	9
B	3
C	0
D	0
F	5
W	0
I	0
<b>Total</b>	<b>17</b>



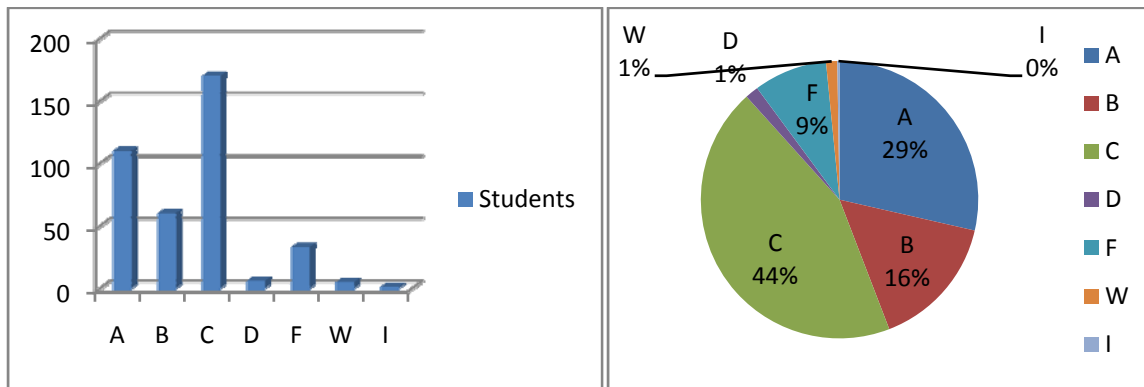
**BUS 495 Business Strategy**  
**Term: May 2008**  
**Section: 30009036**

Letter Grade	Students
A	9
B	3
C	0
D	0
F	5
W	0
I	0
<b>Total</b>	<b>20</b>



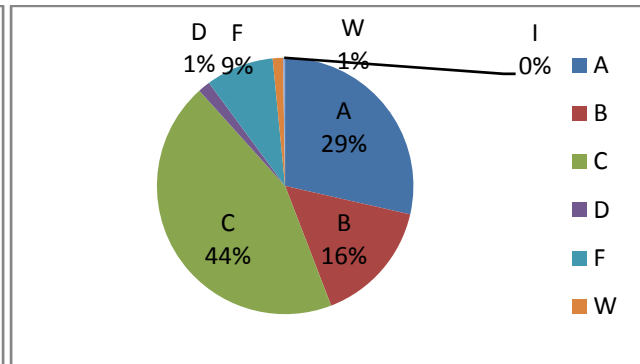
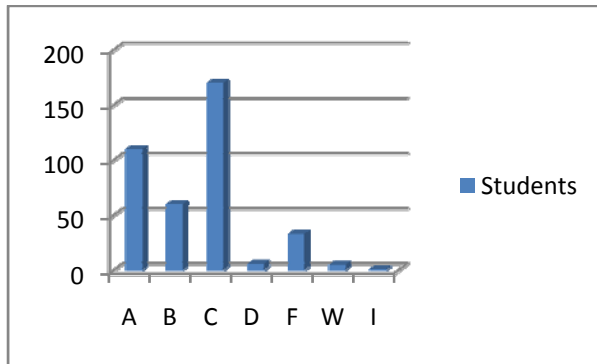
**BUS 495 Business Strategy**  
**Term: May 2008**  
**Section: 30010084**

Letter Grade	Students
A	15
B	4
C	0
D	0
F	1
W	0
I	0
<b>Total</b>	<b>20</b>



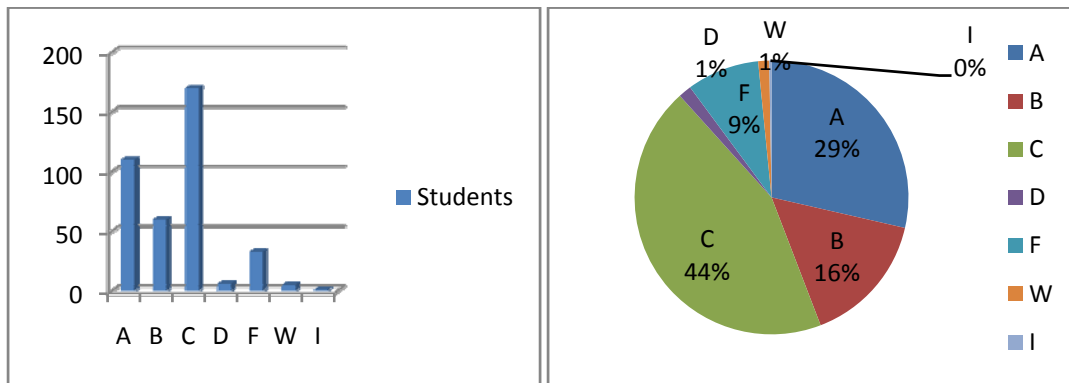
**BUS 495 Business Strategy**  
**Term: May 2008**  
**Section: 30010085**

Letter Grade	Students
A	17
B	3
C	0
D	0
F	2
W	0
I	0
<b>Total</b>	<b>22</b>



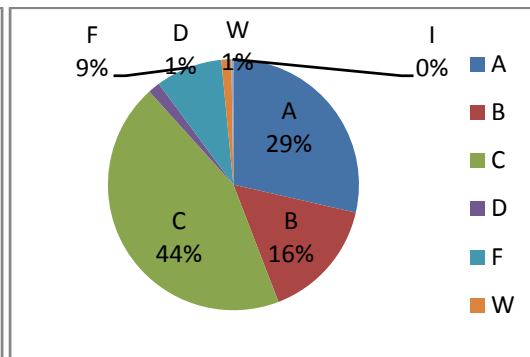
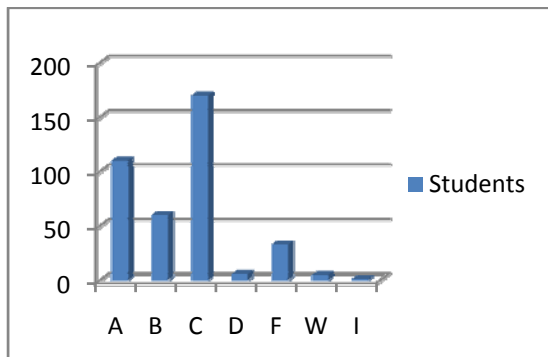
**BUS 495 Business Strategy**  
**Term: July 2008**  
**Section: 30009458**

Letter Grade	Students
A	13
B	1
C	0
D	1
F	3
W	0
I	0
<b>Total</b>	<b>18</b>



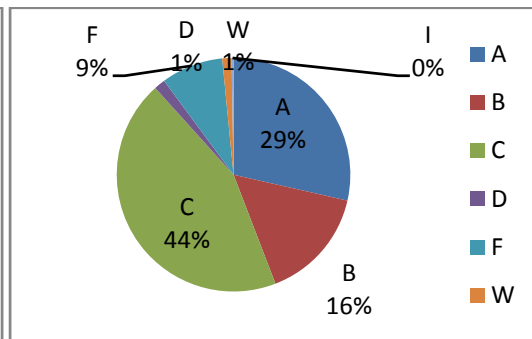
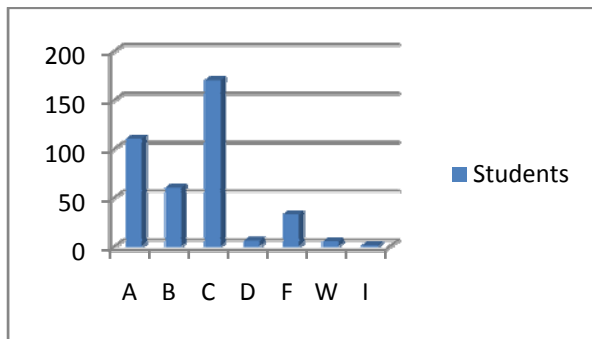
**BUS 495 Business Strategy**  
**Term: September 2008**  
**Section: 30009471**

Letter Grade	Students
A	18
B	3
C	0
D	0
F	3
W	0
I	0
<b>Total</b>	<b>24</b>



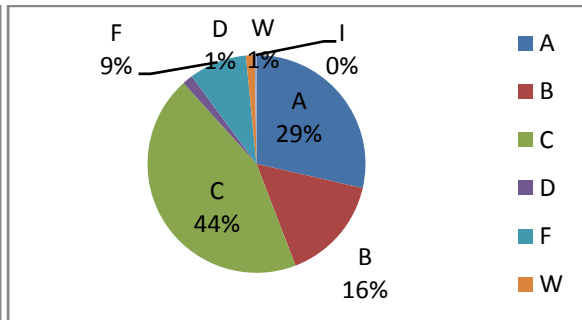
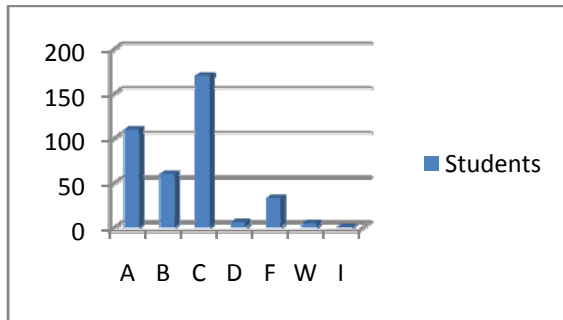
**BUS 495 Business Strategy**  
**Term: September 2008**  
**Section: 30011022**

Letter Grade	Students
A	4
B	9
C	4
D	0
F	4
W	2
I	0
<b>Total</b>	<b>23</b>



**BUS 495 Business Strategy**  
**Term: November 2008**  
**Section: 30010431**

Letter Grade	Students
A	4
B	6
C	6
D	1
F	4
W	1
I	1
<b>Total</b>	<b>24</b>



**Total Grade Distribution**  
**Terms: September 2007 to November 2008**

Letter Grade	Students
A	110
B	60
C	170
D	6
F	33
W	5
I	1
<b>Total</b>	<b>385</b>

